



# Poles & Pole Line Hardware

**AWG is your single source solution for all wire, cable, hardware, equipment, component and accessories.**

Utility poles are the backbone of overhead power infrastructure, playing a vital role in delivering electricity to homes, businesses, and critical facilities. As energy demands rise and infrastructure challenges grow more complex, selecting the right pole material has never been more important.

At American Wire Group (AWG), we provide a full line of transmission and distribution (T&D) poles and pole line hardware built to perform in today's demanding environments. Whether your application involves electric utilities, telecommunications, or roadway lighting, our poles are engineered for safety, strength, and long-term reliability.

We offer multiple steel and composite poles, designed to help you achieve your project's performance, environmental, and budgetary requirements.

With decades of expertise and industry experience, AWG helps utilities, EPCs, and developers choose the right pole for every project. We are empowering stronger, smarter infrastructure with our poles and pole line hardware solutions.

[www.buyawg.com](http://www.buyawg.com)

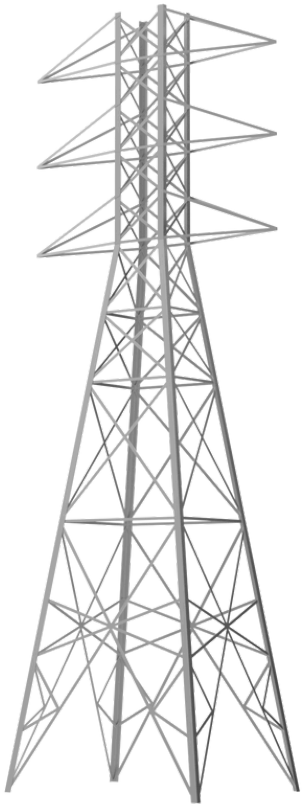


# Empowering Your Project With More Than Just Wire & Cable

## Types of Poles

Utility poles play a vital role in supporting the overhead lines that power homes, businesses, and infrastructure. As energy demands grow, selecting the right material is essential to ensure longevity, minimize maintenance, and withstand environmental challenges. Understanding the differences between these poles is key to building durable, resilient systems.

### STEEL POLES



Steel poles are a strong, adaptable solution for modern transmission and distribution systems. Steel poles are built to resist environmental stress and corrosion. Steel poles are engineered for longevity, offering excellent resistance to wind, impact, and environmental exposure.

Steel poles offer excellent structural integrity with less material, enabling them to support heavier loads and longer spans than wood without increasing pole size. Their strength and design flexibility make them ideal for urban, high-voltage, and space-restricted environments.

### COMPOSITE POLES



Composite poles are a modern, high-performance alternative to traditional wood, concrete, and steel structures. Manufactured using advanced fiberglass and polymer materials, these poles are engineered specifically for long-term use in high-stress environments. Their construction combines strength and durability with lightweight properties, making them ideal for a wide range of applications across transmission, distribution, and telecom infrastructure.

Composite poles are designed to withstand some of the harshest environmental conditions. They hold up exceptionally well in regions prone to humidity, extreme heat, coastal salt exposure, hurricanes, and other forms of severe weather. This resilience reduces the risk of environmental degradation, corrosion, and structural failure over time.

## Pole Line Hardware & Accessories



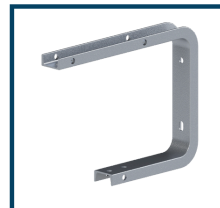
Pole Mounted Transformers



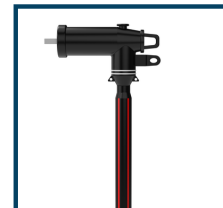
Insulators & Pin Insulators



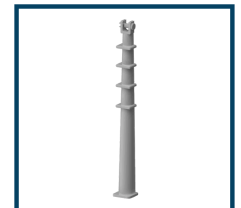
Dead-End Insulator



Brackets



Arrester



Anti-Sway Bracket



[buyawg.com](http://buyawg.com) | [sales@buyawg.com](mailto:sales@buyawg.com) | 800.342.7215 | 945.455.3050