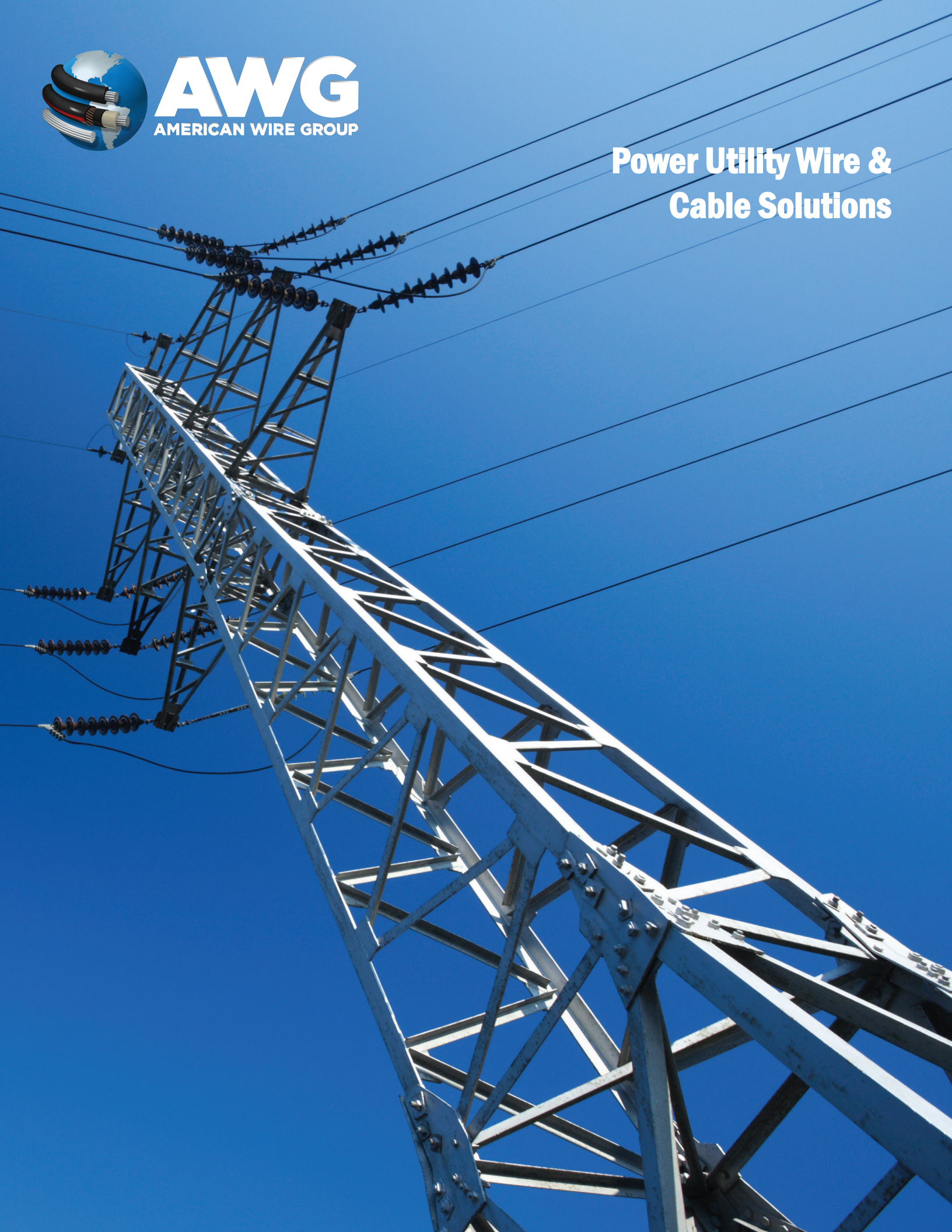




AWG
AMERICAN WIRE GROUP

Power Utility Wire & Cable Solutions



UTILITY**OVERHEAD BARE ALUMINUM
DISTRIBUTION & TRANSMISSION CABLE**

- AAC
- AAAC
- ACSR, ACAR, ACSS, ACCC
- Guy Wire / Static Wire
- Aluminum Clad Steel
- Twisted Pair (TW)

PRIMARY URD CABLE (15 kV to 35 kV)

- Aluminum & Copper Conductors
- EPR or TR-XLPE Insulation

**MULTIPLEX OVERHEAD ALUMINUM
SERVICE DROP CABLE (600 V)**

- Duplex Overhead
- Triplex Overhead
- Quadruplex Overhead

POWER CABLE (5 kV to 35 kV)

- PowerGuard® MV-90 & MV-105
TR-XLPE or EPR Insulation

**UNDERGROUND SECONDARY URD CABLE
(600 V)**

- Single Conductor Type UD Cable
- Duplex Underground
- Triplex Underground
- Quadruplex Underground
- Control & Cable in Duct (CIC)

**AERIALGUARD® TREE WIRE OR
SPACER CABLE**

- AerialGuard® Spacer Cable
System Solutions
- Copper or Aluminum Conductor
- PE or XLPE Insulation

POWER & CONTROL CABLE

- TC or TC-ER Unarmored Power and Control
Cable
- XHHW-2 with CPE, LSOH
- FREP with CPE, LSOH
- Thermocouple Cables
- Instrumentation Cables

GROUNDING WIRE

- 14 AWG to 1000 kcmil Bare or Tinned
- Soft and Hard Drawn Tempers

LOW VOLTAGE**ALUMINUM BUILDING WIRE**

- XHHW-2
- USE-2 / RHH / RHW-2
- SE-U and SE-R
- URD 600 V

COPPER BUILDING WIRE

- XHHW-2
- THHN / THWN-2
- USE-2 / RHH / RHW-2
- UF-B
- SE-U and SE-R

FLEXIBLE CABLE

- DLO 2 kV
- Motor Lead
- Welding Cable
- Jumper Cable

IMSA TRAFFIC SIGNAL CABLE

- IMSA 19-1 Traffic Control Cable
- IMSA 20-1 Traffic Control Cable
- IMSA 51-5 Tube Loop Detector Cable
- IMSA 50-2 Loop Detector Lead-In Wire
- IMSA 51-1 THHN Loop Detector Lead-In Wire
- IMSA 51-3 Loop Detector Wire

**HIGH VOLTAGE &
SUBSEA CABLES****HIGH VOLTAGE (HV) CABLES**

- 46 kV - 138 kV (XLPE)

EXTRA HIGH VOLTAGE (EHV) CABLES

- 230 kV - 500 kV (XLPE)

SUBSEA CABLES (AC & DC)

- 5 kV - 500 kV (XLPE)

COMMUNICATON**FIBER OPTIC CABLE
Single & Multimode**

- Outdoor
- Indoor
- OPGW & associated hardware
- ADSS

HARDWARE & ACCESSORIES**MEDIUM VOLTAGE ACCESSORIES**

- Medium & large compression
terminals & splices
- T-Body kits
- Elbow arrestors
- MV splices
- Termination cold shrink/heat shrink
- Deadbreak connectors

TREE WIRE & SPACER CABLE SYSTEMS

- Spacer
- Tangent bracket
- Angle bracket
- Insulator pin type with ratchet
- Deadend bracket
- Deadend insulator

EQUIPMENT

- Transformers

HARDWARE

- Nuts/bolts/washers
- Clamps/braces/shackles
- Rods/anchors
- Eyelets, connectors
- Clevises
- Guy grips

