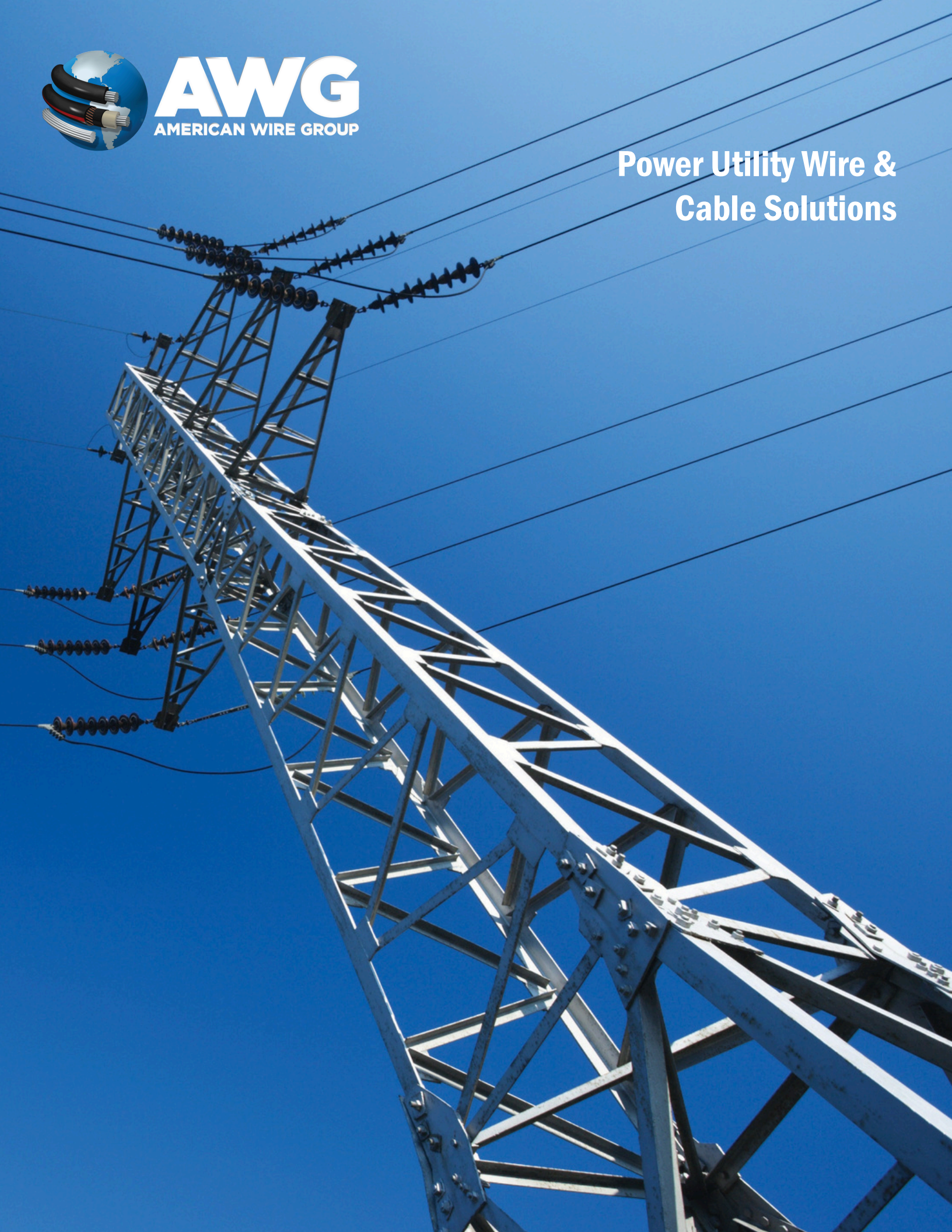




**AWG**  
AMERICAN WIRE GROUP

# Power Utility Wire & Cable Solutions



**UTILITY****OVERHEAD BARE ALUMINUM  
DISTRIBUTION & TRANSMISSION CABLE**

- AAC, AAAC, ACSR, ACAR, ACSS, ACCC
- Guy Wire / Static Wire
- Aluminum Clad Steel
- Twisted Pair (TW)

**PRIMARY URD CABLE (15 kV to 35 kV)**

- Aluminum & Copper Conductors
- EPR or TR-XLPE Insulation

**MULTIPLEX OVERHEAD ALUMINUM  
SERVICEDROP CABLE (600 V)**

- Duplex Overhead
- Triplex Overhead
- Quadruplex Overhead

**MEDIUM VOLTAGE POWER CABLE  
(5 kV to 35 kV)**

- PowerGuard® MV-90 & MV-105  
TR-XLPE or EPR Insulation

**UNDERGROUND SECONDARY URD CABLE  
(600 V)**

- Single Conductor Type UD Cable
- Duplex Underground
- Triplex Underground
- Quadruplex Underground
- Control & Cable in Duct (CIC)

**AERIALGUARD® TREE WIRE AND  
SPACER SYSTEM SOLUTIONS**

- AerialGuard® Tree Wire and  
Spacer Cable & Hardware
- Copper or Aluminum Conductor
- PE or XLPE Insulation

**POWER & CONTROL CABLE**

- ControlGuard® TC or TC-ER Unarmored  
Power and Control Cable
- XHHW-2 with CPE, LSOH
- FREP with CPE, LSOH
- Thermocouple Cables
- Instrumentation Cables

**GROUNDING WIRE**

- 14 AWG to 1000 kcmil Bare or Tinned
- Soft, Medium and Hard Drawn Tempers

**LOW VOLTAGE****ALUMINUM BUILDING WIRE**

- XHHW-2
- THHN / THWN-2
- USE-2 / RHH / RHW-2
- SE-U and SE-R
- URD 600 V

**COPPER BUILDING WIRE**

- XHHW-2
- THHN / THWN-2
- USE-2 / RHH / RHW-2
- UF-B
- SE-U and SE-R

**FLEXIBLE CABLE**

- BatteryGuard® DLO 2 kV
- Motor Lead
- Welding Cable
- Jumper Cable

**IMSA TRAFFIC SIGNAL CABLE**

- IMSA 19-1 Traffic Control Cable
- IMSA 20-1 Traffic Control Cable
- IMSA 51-5 Tube Loop Detector Cable
- IMSA 50-2 Loop Detector Lead-In Wire
- IMSA 51-1 THHN Loop Detector Lead-In Wire
- IMSA 51-3 Loop Detector Wire

**HIGH VOLTAGE &  
SUBSEA CABLES****HIGH VOLTAGE (HV) CABLES**

- 46 kV - 138 kV (XLPE)

**EXTRA HIGH VOLTAGE (EHV) CABLES**

- 230 kV - 500 kV (XLPE)

**SUBSEA CABLES (AC & DC)**

- 5 kV - 500 kV (XLPE)

**COMMUNICATON****FIBER OPTIC CABLE  
Single & Multimode**

- Outdoor
- Indoor
- OPGW & associated hardware
- ADSS

**HARDWARE & ACCESSORIES****MEDIUM VOLTAGE ACCESSORIES**

- Medium & large compression  
terminals & splices
- T-Body kits
- Elbow arrestors
- MV splices
- Termination cold shrink/heat shrink
- Deadbreak connectors

**TREE WIRE & SPACER CABLE SYSTEMS**

- Spacer
- Tangent bracket
- Angle bracket
- Insulator pin type with ratchet
- Deadend bracket
- Deadend insulator

**EQUIPMENT**

- Transformers (power, pad-mounted, pole-  
mounted, dry-type)

**HARDWARE**

- Nuts/bolts/washers
- Clamps/braces/shackles
- Rods/anchors
- Eyelets, connectors
- Clevises
- Guy grips

**POLES & POLE LINE HARDWARE**

- Poles (composite, steel, concrete, wood)
- Insulators
- Cross-arms & brackets
- Anchors & guys
- Clamps & connectors
- Bolts & fasteners
- Hangers & hooks

