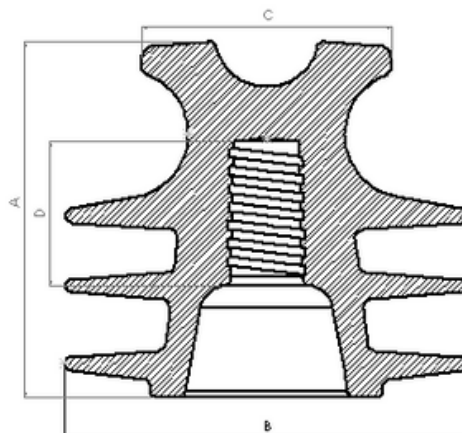


AerialGuard® Pin Insulator - Polymeric (Tie-Top)



APPLICATIONS

Polymeric pin insulators - tie-top are rated for use in 15 kV, 25 kV or 35 kV distribution systems. They are used for any application that calls for polymer or porcelain pin insulators to mount either covered conductors or bare conductors, where an insulator is required to isolate phase conductors that are not fully insulated. An insulator pin is used to attach insulators to either steel brackets or standard crossarms in tree wire or spacer systems. Insulated tie wire is used to fasten the conductors to the insulators. More durable than traditional porcelain insulators against vandalism and impact.

CONSTRUCTION

Manufactured of track resistant high density gray polyethylene. The insulators are designed to ANSI thread and neck sizes. The 15 kV insulators have ANSI standard 1.0" thread. The 25 kV and 35 V insulators available with either ANSI standard 1.0" thread or ANSI standard 1-3/8" thread.

FEATURES & BENEFITS

- Designed to ANSI C29 electrical and mechanical requirement.
- Highly resistant to shock and impact.
- UV protected and weather conditions resistant.
- Superior moisture and contamination shedding.
- Made from recyclable plastic.

Item Number	System Voltage (kV)	Dimensions				Threads (in)	Weight (lb)	Flexion Threads Term (lbf)	Mechanical Resistance (lbf)	Dry-Arc Distance (in)	Leakage Distance (in)	Creepage Distance (in)
		A (in)	B (in)	C (in)	D (in)							
PTI-15-100	15	4.92	5.51	3.35	1.77	1.00	1.00	17985	3372	7.87	15.00	16.33
PTI-25-100	25	5.31	7.48	3.74	1.77	1.00	1.72	17985	3372	9.45	15.00	18.11
PTI-25-138	25	5.31	7.48	3.74	1.77	1.38	1.72	17985	3372	9.45	15.00	18.11
PTI-35-100	35	6.89	7.48	3.74	1.77	1.00	2.28	17985	3372	11.02	20.50	22.04
PTI-35-138	35	6.89	7.48	3.74	1.77	1.38	2.28	17985	3372	11.02	20.50	22.04

NOTES

1. Lbf is pound-force unit of measurement.