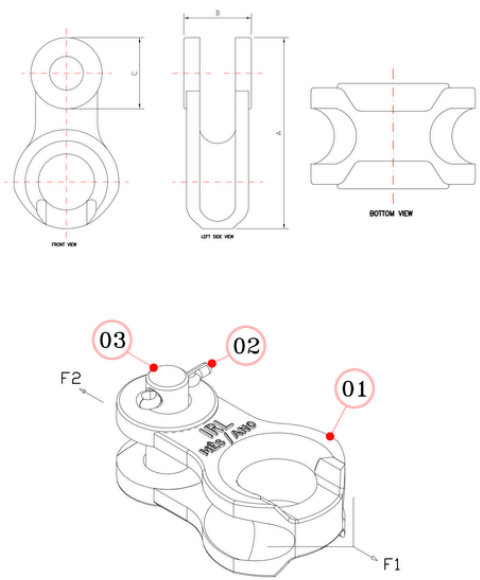


AerialGuard® Thimble Clevis



APPLICATIONS

A thimble clevis is used as the connector when dead-ending the cable. The thimble clevis provides a smooth contoured surface to connect the looped end of the dead-end grip to a dead-end insulator or bracket.

CONSTRUCTION

Cast steel, hot dip galvanized in accordance to ASTM A-513.
Supplied with bolt and cotter pin.

FEATURES & BENEFITS

- Provides a smooth contoured channel surface for the dead-end grip connection.
- Eliminates stress concentration damage to the loop end of the dead-end grip.
- Allows replacement of dead-end insulator without removal of the dead-end grip.

Item Number	Dimensions			Weight (lb)	Load (lb)
	A (in)	B (in)	C (in)		
TC-01	4.33	1.34	1.46	1021	11240

